

LC STATE COVID-19 RESPONSE PLAN

Lewis-Clark State College Updated Aug. 10, 2020

PURPOSE

The purpose of this document is to outline the college's procedures for responding to reports from LC State employees or students of the following:

- 1) Having a confirmed case of COVID-19,
- 2) Having close contact with someone who is confirmed to have a case of COVID-19.

NOTE: *This is a fluid document and all elements are subject to change as the COVID-19 pandemic evolves and related CDC and/or Public Health guidance is adapted.*

DEFINITIONS

Close Contact – having been separated by less than 6 feet from someone for more than 15 minutes.

Quarantine – staying away from public spaces for a prescribed period of time but having no symptoms of illness or no confirmed illness.

Isolation – staying away from public spaces for a prescribed period of time while having symptoms of illness or a confirmed illness.

Confirmed Case of COVID-19 – Reported to the college or confirmed by Idaho Public Health.

VPSA – Vice President for Student Affairs.

Director of HRS – Director of Human Resource Services.

LC State COVID-19 Tactical Group

Andrew T. Hanson, Vice President for Student Affairs (lead)

Office: 208-792-2218

Cell: 208-553-8238

Email: ahanson@lcsc.edu

Lori Stinson, Provost/Vice President for Academic Affairs (back-up lead)

Office: 208-792-2213

Cell: 208-596-6175

Email: lstinson@lcsc.edu

Julie Crea, Vice President for Finance and Administration

Office: 208-792-2240

Email: jcrea@lcsc.edu

Tom Garrison, Director of the Physical Plant

Office: 208-792-2247

Email: tgarrison@lcsc.edu

LC State COVID-19 Tactical Group (continued)

JoAnn Gilpin, Director of Campus Security and Emergency Preparedness

Office: 208-792-2226

Email: jgilpin@lcsc.edu

Doug Steele, Director of the Student Counseling Center (and Student Health Services)

Office: 208-792-2211

LC STATE COVID-19 RESPONSE PLAN

Email: dlsteele@lcsc.edu

Logan Fowler, Director of College Communications and Marketing
Office: 208-792-2200
Email: ljfowler@lcsc.edu

Brooke Henze, Director of Athletics
Office: 208-792-2675
Email: blhenze@lcsc.edu

Vikki Swift-Raymond, Director of Human Resource Services
Office: 208-792-2269
Email: vswift@lcsc.edu

Debbie Kolstad, Director of Residence Life
Office: 208-792-2053
Email: dqkolstad@lcsc.edu

Celeste McCormick, Interim Director of Information Technology
Office: 208-792-2215
Email: cmmccormick@lcsc.edu

Tim Wheeler, Director of Food Services
Office: 208-792-2135
Email: twheeler@lcsc.edu

Additional Resources

President's Office
Dr. Cynthia L. Pemberton, President
Ms. Lori Ruddell, Executive Assistant/Office of the President
Office: 208-792-2216
Email: president@lcsc.edu

Additional Resources (continued)

Sr. Director, LCSC Coeur d'Alene Center
Rocky Owens
Office: 208-292-2673
Email: rwowens@lcsc.edu

Idaho Public Health North Central District
Office: 208-799-3100

LCSC Student Health Services
Office: 208-792-2251

Executive Cabinet

Dr. Cynthia L. Pemberton, President
Dr. Lori Stinson, Provost/Vice President for Academic Affairs
Dr. Andrew T. Hanson, Vice President for Student Affairs
Dr. Julie Crea, Vice President for Finance and Administration

LC STATE COVID-19 RESPONSE PLAN

Coordination/Communication with the President's Office and Public Health

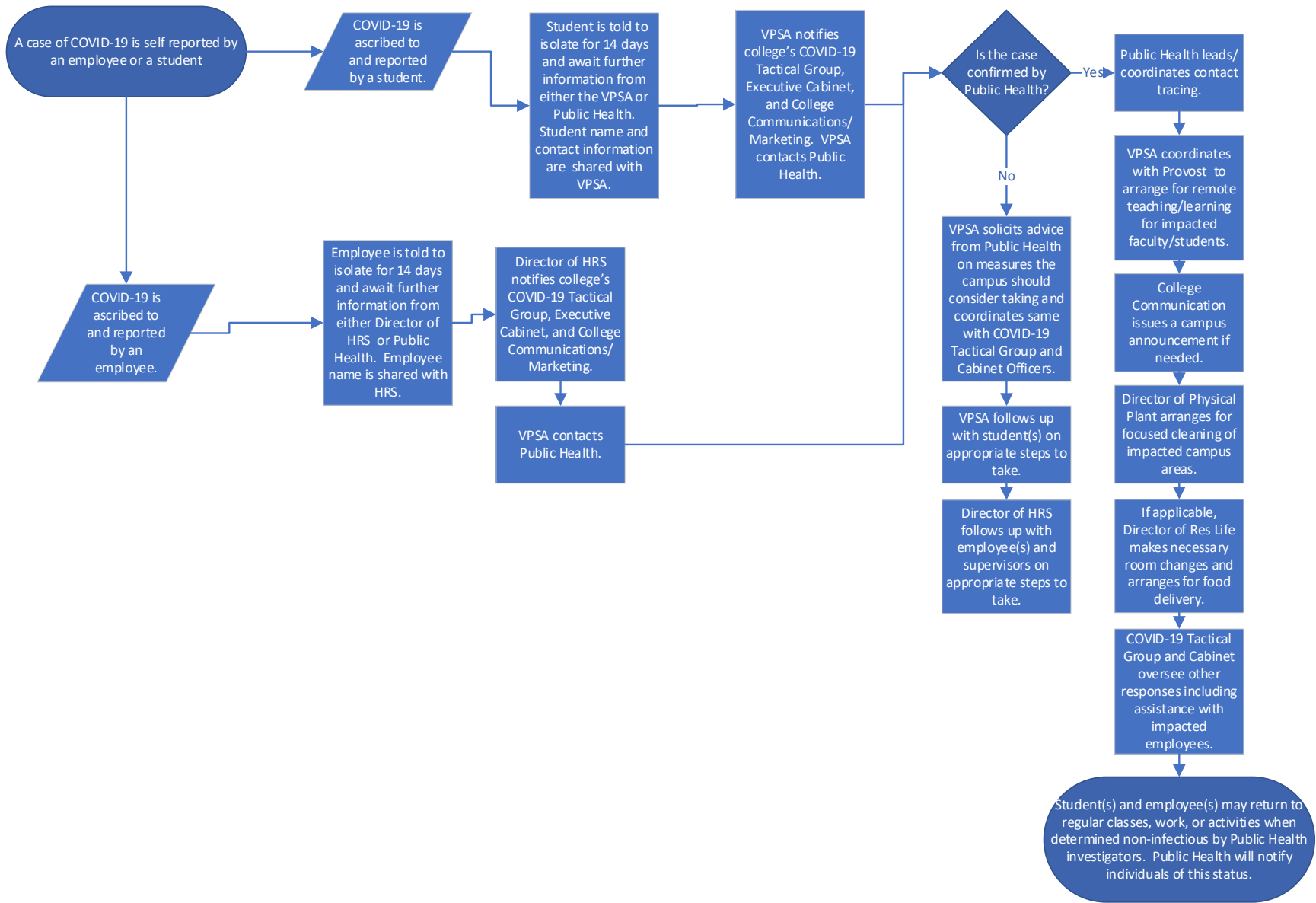
The LC State COVID-19 Tactical Group lead is responsible for communicating with the President's Office and Public Health – North Central District throughout the decision-point process and general response outlined in the flowcharts published on the next two pages. The Senior Director of the college's Coeur d'Alene Center will communicate with Public Health – Panhandle District and will communicate with the COVID-19 Tactical Group lead as well.

Returning to Campus

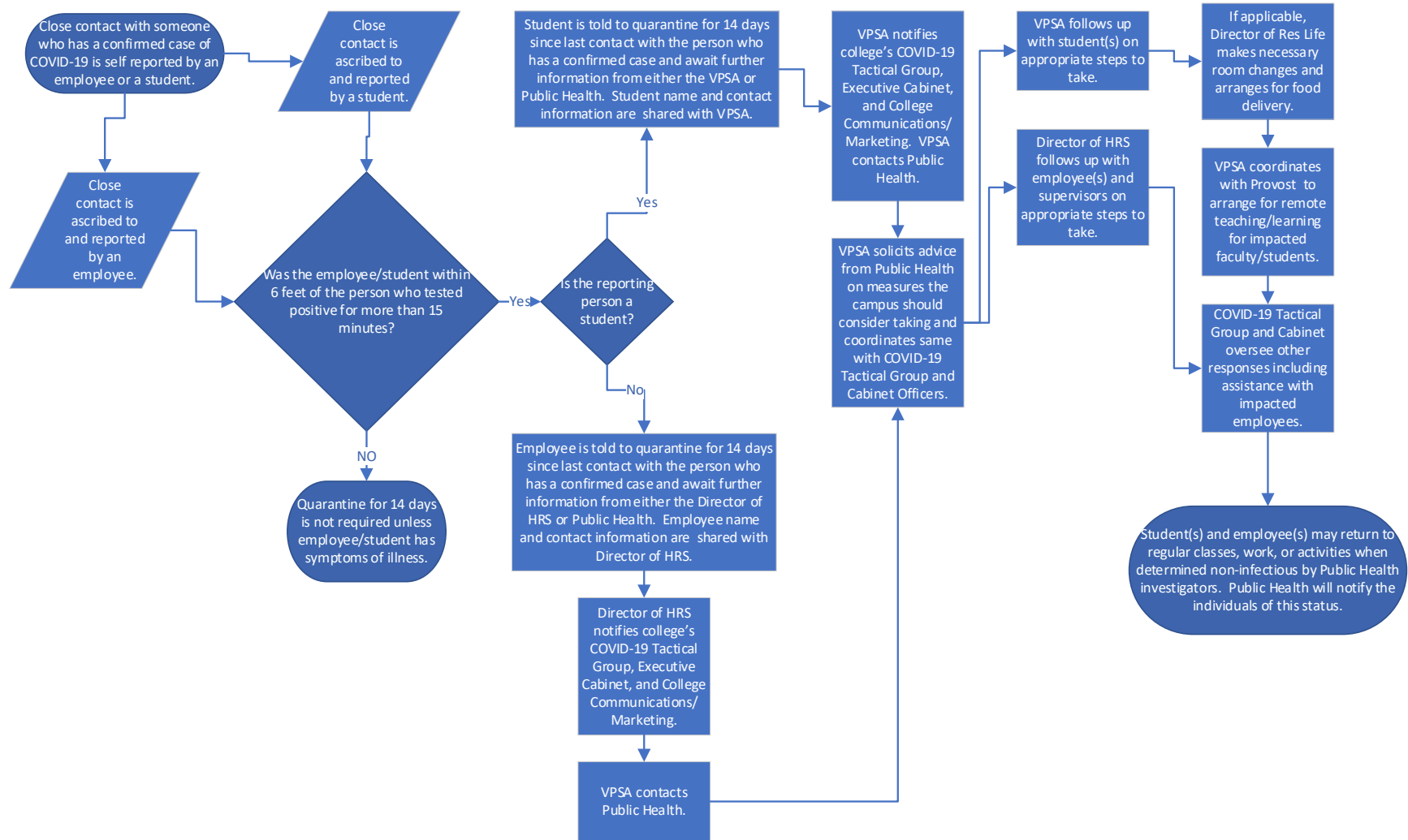
Upon receiving notice from Public Health or another qualified medical professional, a college employee may return to work. The employee will need to submit documentation to Human Resource Services (hr@lcsc.edu) verifying the clearance to return to campus.

Upon receiving notice from Public Health or another qualified medical professional, a student may return to normal campus activity including attending classes. The student will need to submit documentation to the Vice President for Student Affairs (studentaffairs@lcsc.edu) verifying the clearance to return to normal campus activity including attending classes.

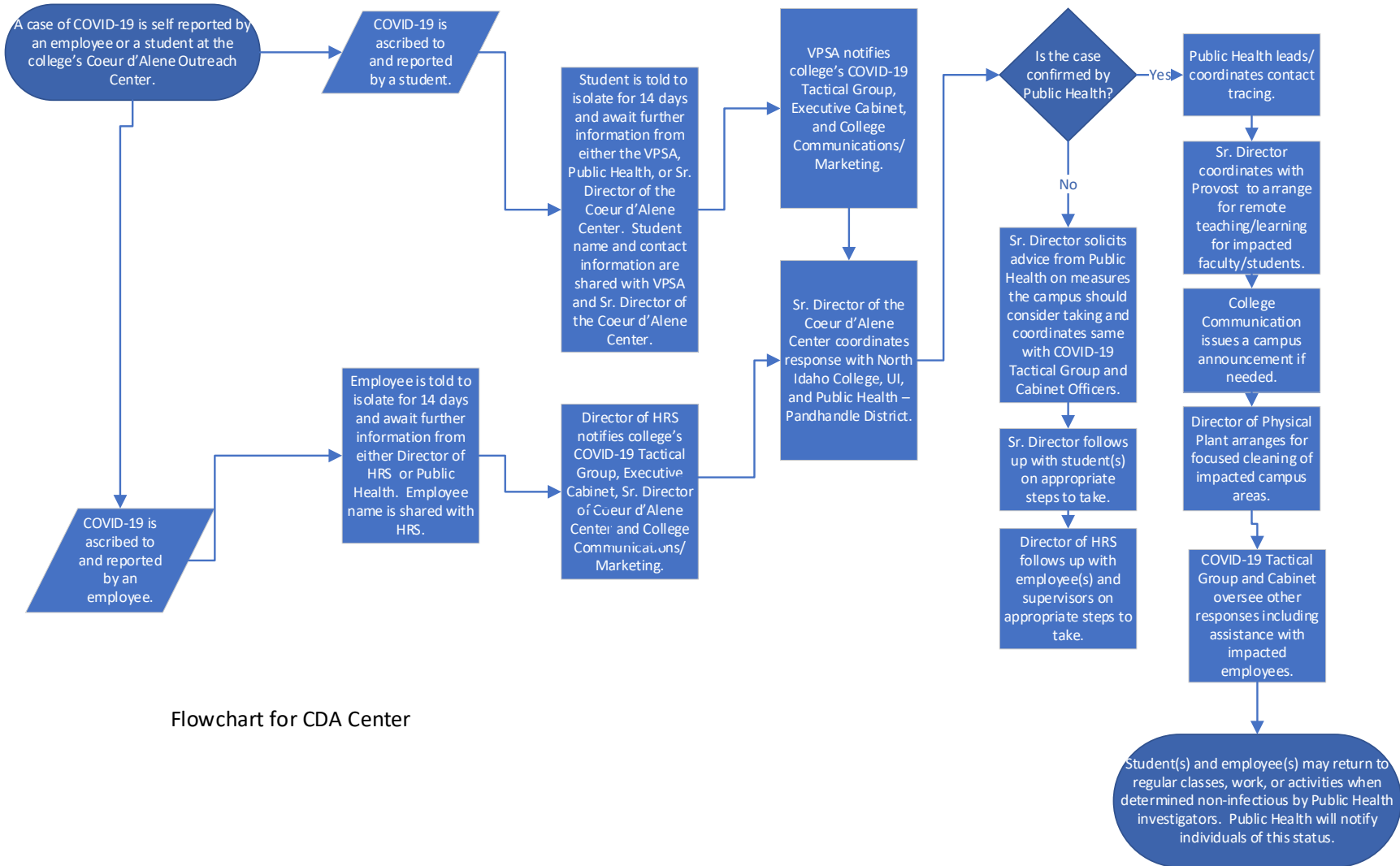
LC STATE COVID-19 RESPONSE PLAN



LC STATE COVID-19 RESPONSE PLAN

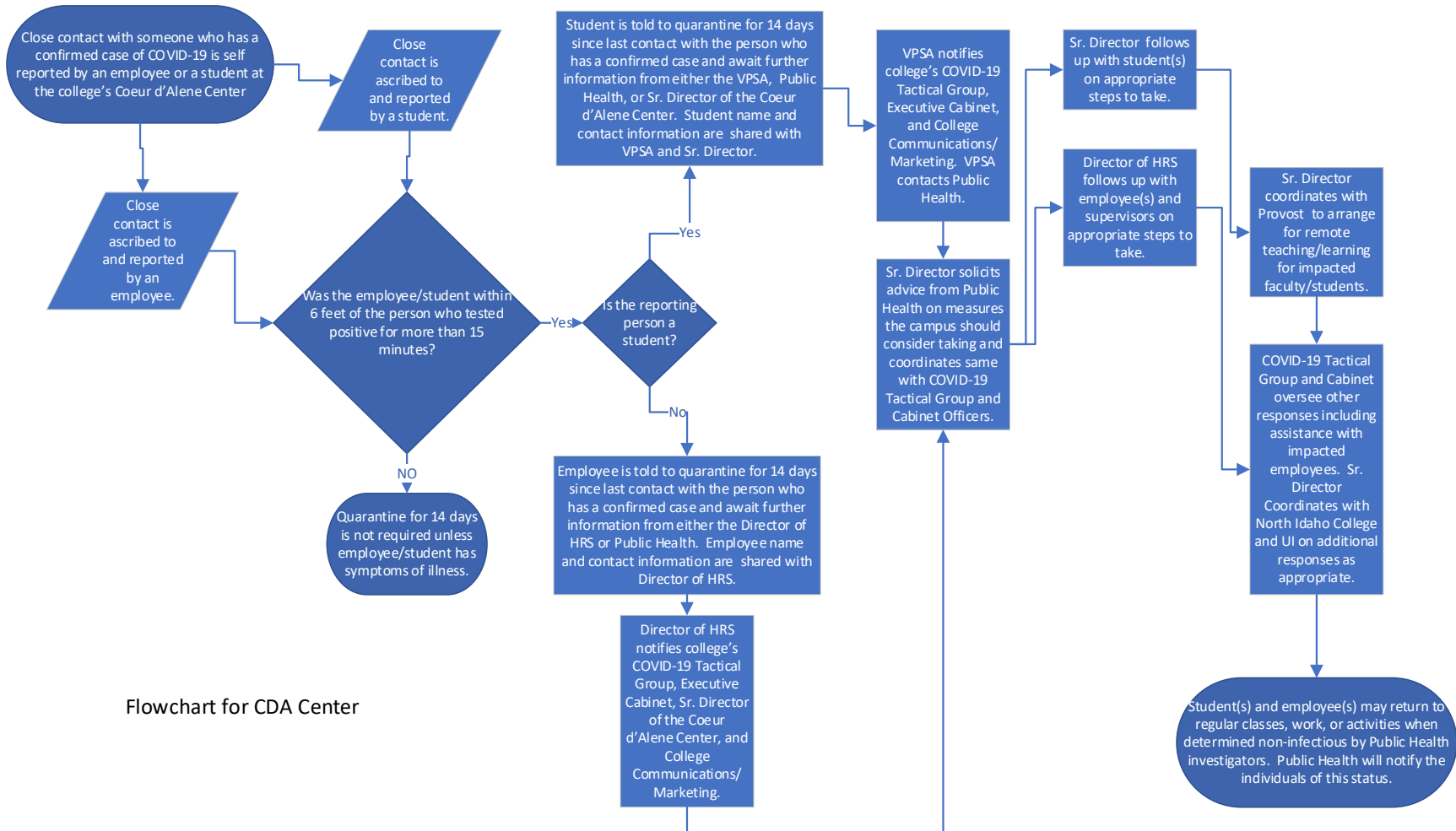


LC STATE COVID-19 RESPONSE PLAN

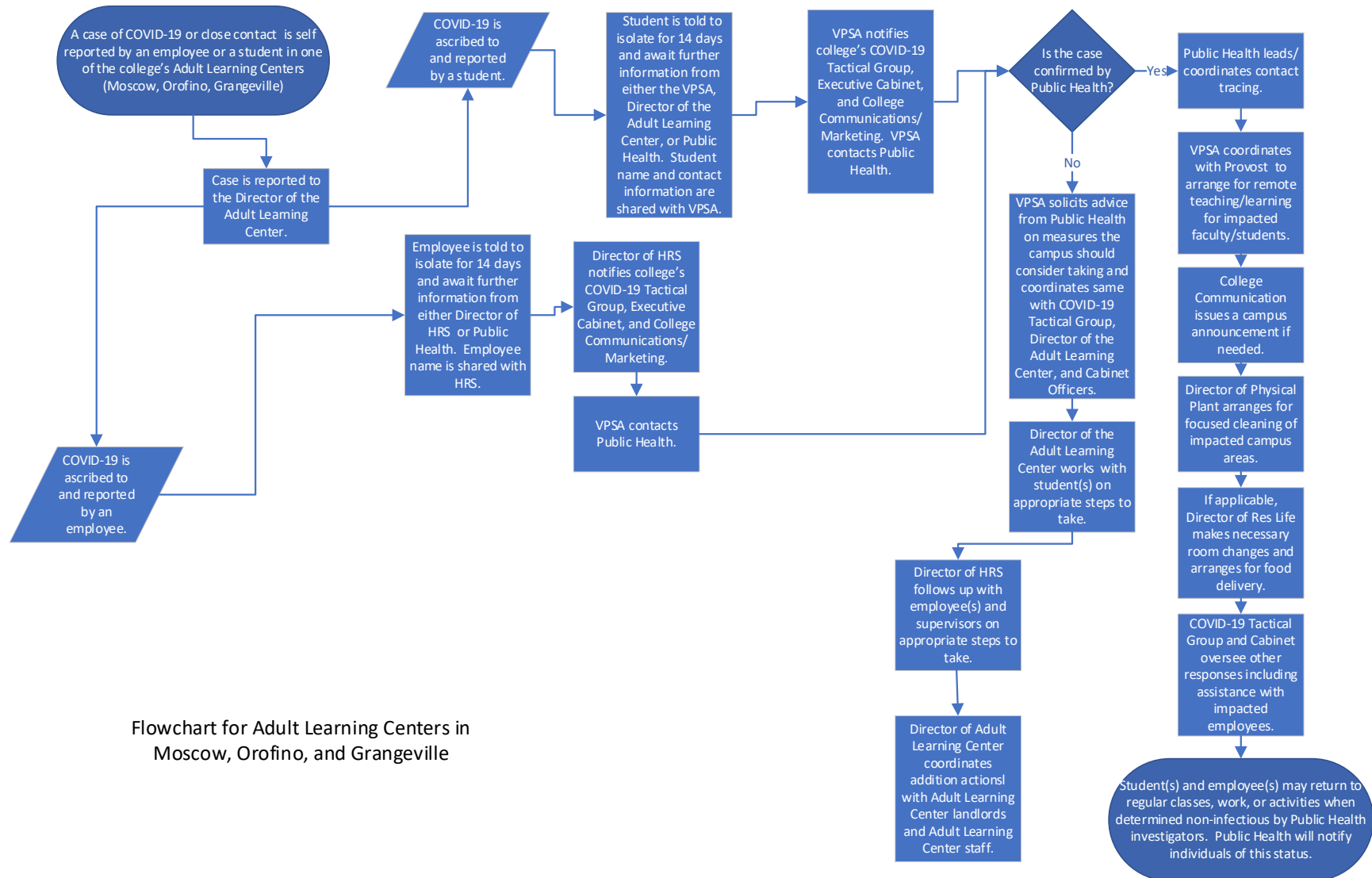


Flowchart for CDA Center

LC STATE COVID-19 RESPONSE PLAN



LC STATE COVID-19 RESPONSE PLAN



Flowchart for Adult Learning Centers in Moscow, Orofino, and Grangeville